



The Sino-British College

The University of Shanghai for Science and Technology

SBC, USST



History of USST

IET The Institution of
Engineering and Technology

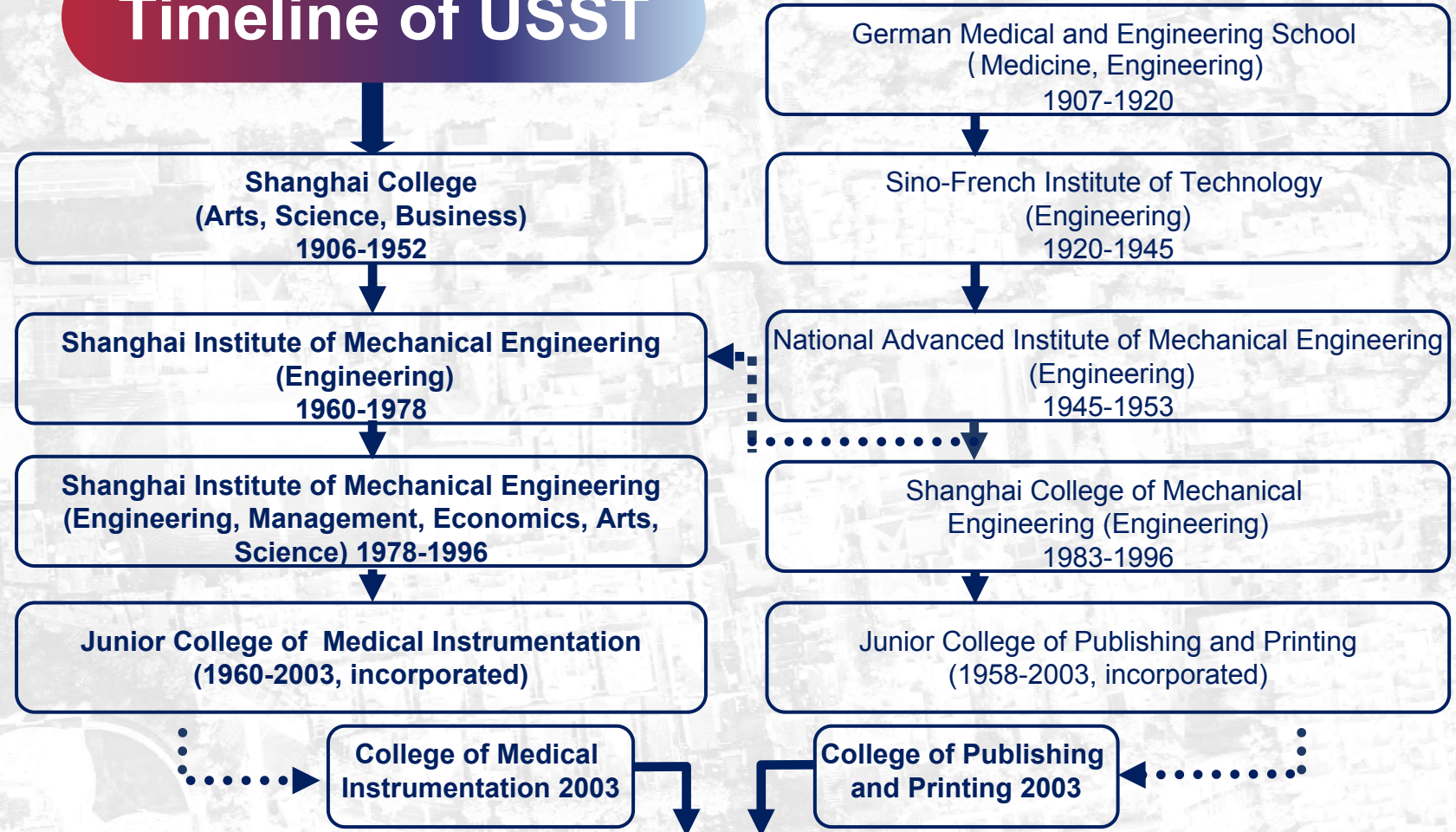
AACSB Association
to Advance
Collegiate
Business
Schools
International

PRME
SIGNATORY MEMBER

CIOL

EFMD
GLOBAL
MEMBER

Timeline of USST



The University of Shanghai for Science and Technology



To create a
**distinctive first-class
university of science
and technology**



Status of USST

IET The Institution of
Engineering and Technology



PRME
SIGNATORY MEMBER



Fuxing Rd. Campus



Jungong Rd. Campus

Student Body	30,000+ students: 18,000+ undergraduates, 12,000+ postgraduates
Faculty & Staff	2,700+ employees, 7 Academicians, 108 recipients of National-level Talents, 442 recipients of Provincial/ministerial-level Talents
Scientific Research	1 ESI Top 1% Discipline: Engineering 11 ESI Top 1% Disciplines: Engineering, Materials Science, Chemistry, Computer Science, Environment/Ecology, Agricultural Sciences, Mathematics, Physics, Social Sciences, General etc.
Platforms	36 national-level teaching/research platforms, 101 provincial/ministerial-level platforms
Internationalization	2 Sino-Foreign Cooperative Education Institutions: The Sino-British College, The Sino-German College 43.1% of programmes pass international certification; Asia's first ASIIN certification; 20th Chinese university to pass AACSB certification
Social Service	National Model Institution for Technology Transfer



Academic Reputation



6 individuals selected as 2023 "Highly Cited Researchers"	Ranked 46th nationally
2024 ShanghaiRanking's Academic Ranking of World Universities	Ranked 52nd-74th nationally
Development Speed Ranking of ShanghaiRanking's Academic Ranking of World Universities	Ranked 9th nationally
China University Alumni Association 2025 China University Rankings	Ranked 72nd nationally
2024 China University Graduate Salary Level Ranking	Ranked 36th nationally

*There are a total of 3119 higher education institutions in China (source: Ministry of Education website, June 11, 2025)



History of SBC

IET The Institution of
Engineering and Technology

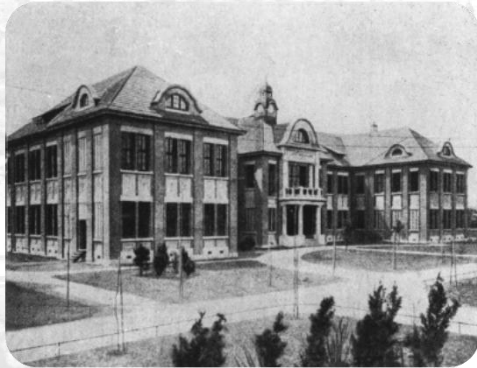
AACSB Business
Education
Accreditation
Member

PRME
SIGNATORY MEMBER

CIOL

EFMD
GLOBAL
MEMBER

Founded in 2006



1985-1998 Hamburg University of Applied Sciences

1988-1996 Shanghai-New York Syracuse International Business College

**2006-present
The Sino-British College,
USST**



**Three majors in Medical,
Engineering and German**

**One of the pivotal origins of
the university's
century-long engineering
education**

**1996-2006
Business School, USST**

1953-1982
Shanghai School of Power Machinery Manufacturing
Shanghai School of Machinery Manufacturing
1983-1996
Shanghai Junior College of Machinery Engineering

**2004-2006
MBA Degree Center**

1907-1919
Tongji German Medical
School (Tongji Deutsche
Medizinschule)

1920-1945
Sino-French Institute of Technology (Institut
Franco-Chinois d'Ingénierie)
1945-1953
National Shanghai Advanced Mechanical
Vocational School





Gathering of Talents

IET The Institution of
Engineering and Technology



PRME
SIGNATORY MEMBER



Qian Lingxi (1916-2009)
Engineering Mechanic



Tian Binggeng (1919-2017)
Electrical Engineering Expert



Zhou Liwei (1932-2018)
Electro-Optics and Night
Vision Technology Expert



Min Naiben (1935-2018)
Crystal Physicist



Su Dingqiang (1936-2018)
Astronomer and Optical
Engineering Expert

Academicians of the Chinese Academy of Engineering



SBC Location

IET The Institution of
Engineering and Technology

AACSB Business
Education
Alliance
Member

PRME
SIGNATORY MEMBER

CIOL

EFMD
GLOBAL
MEMBER



**Shaanxi South Road
Metro Station**
Line **1** **10** **12**



**Shanghai Pudong
International Airport**
1 hour by car



40 mins by car / line 10

**Shanghai Hongqiao
International Airport**

**Shanghai Hongqiao
Railway Station**



Shanghai Bund



Huaihai Road



Shanghai Culture Square





SBC Campus

IET The Institution of
Engineering and Technology



7 Historical Buildings



Built in 1909



Built in 1909

German Medical
and Engineering
School



Built 1914

Sino-French
Institute of
Technology



Built 1911



Built 1914



Built 1917

SBC Library

A Shanghai-unique Prussian-style building



Built 1914

Independent
campus
with the optimal
downtown location



Distinctive Features

IET The Institution of
Engineering and Technology

AACSB Business
Education
Alliance
Member

PRME
SIGNATORY MEMBER

CIOL

EFMD
GLOBAL
MEMBER





SBC Structure

Management Structure

Highest Decision-Making Body:
Management Council Committee

Administrative Decision-Making Bodies:
Executive Meeting

USST

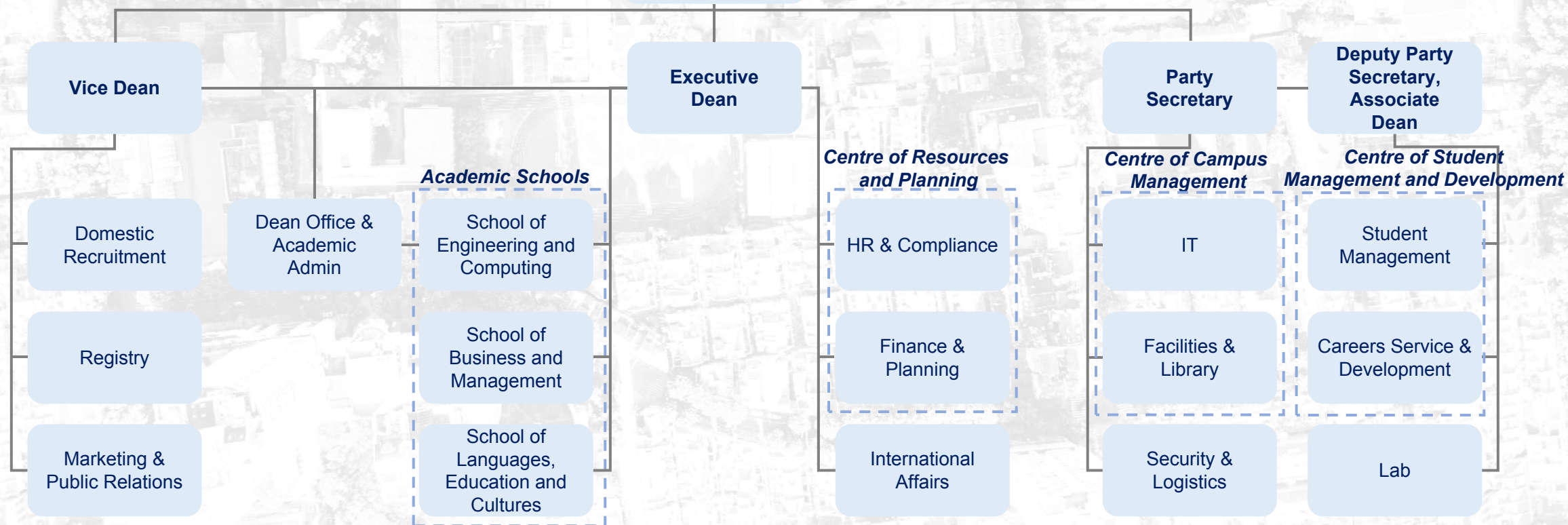
Chair of SBC
Management
Council

Dean of SBC

Internal Department

Party & Administrative Dept.: 12

Chinese & International Faculty/Staff: 120





International Faculty

IET The Institution of
Engineering and Technology

AACSB
Business
Education
Alliance
Member

PRME
SIGNATORY MEMBER

CIOL

EFMD
GLOBAL
MEMBER

Academic Faculty's Educational Background

- University of Oxford
- University College London
- Tsinghua University
- University of Manchester
- Fudan University
- The University of Queensland
- Shanghai Jiao Tong university
- King's College London
- University of Bristol
- University of Birmingham
- University of Warwick
- University of Technology Sydney
- University of Wisconsin-Madison
- University of Leeds
- University of Science and Technology of China
-



Faculty and staff from over **20**
different countries and regions.

International faculty

account for approximately
of the academic staff.

77%





Academic Structure & Programmes

IET The Institution of
Engineering and Technology

AACSB
Business
Education
Alliance
Member

PRME
SIGNATORY MEMBER

CIOL

EFMD
GLOBAL
MEMBER

Academic Structure

School of Business
Management

School of Engineering
and Computing

School of Languages,
Education and Cultures

Programmes



Business Management
(BM)



Mechanical Engineering
(ME)



Electrical & Electronic
Engineering (EEE)

Dual Degree Programme

BM

USST & Sheffield
Hallam University

ME

USST & Liverpool
John Moores
University

EEE

(undergraduate)

(China and UK partner universities)



Four Years in Shanghai



Dual Degree Application Documents



1. Fill out the SBC detailed application form (please send it to the university in Excel format after completion)
2. Copy of passport: Pages with photo and previous visa to China or other countries
3. Copy of high school diploma or equivalent certificate (Prospective diploma recipients must submit an official document issued by the current school to prove the current study status and expected graduation date. If applicants are admitted, a scan copy of the graduation certificate shall be sent before registration)
4. Transcripts of all courses in high school or results of international standardization test (A-LEVEL/IGCSE/AP/SAT/ACT/UEC/STPM etc.)
5. Proof of English language proficiency (IELTS/Duolingo/TOEFL etc.)
6. Physical examination report
7. A digital passport-sized photo
8. Proof of Chinese language proficiency (HSK test)
9. CSCA Test

Major: Business Management

Test subjects: Mathematics

Major: Mechanical Engineering

Test subjects: Mathematics, Physics

Major: Electrical & Electronic Engineering

Test subjects: Mathematics, Physics, Chemistry

Please prepare the above-mentioned materials and send them to: international@sbc.usst.edu.cn



Academic Structure & Programmes

IET The Institution of
Engineering and Technology

AACSB Business
Education
Alliance
Member

PRME
SIGNATORY MEMBER

CIOL

EFMD
GLOBAL
MEMBER

Academic Structure

School of Business
Management

School of Engineering
and Computing

School of Languages,
Education and Cultures

Programmes



Business Management
(BM)



Mechanical Engineering
(ME)



Electrical & Electronic
Engineering (EEE)

Single Degree Programme



(undergraduate)

(UK partner universities)

All courses taught in English

PATHWAY 4+0(3+0): 4(3) Years in Shanghai OR
PATHWAY 2+2(1+2): 2(1) Years in Shanghai+2 Years in UK



Academic Structure & Programmes



What does PATHWAY mean at SBC?

PATHWAY	In Shanghai at SBC	In the UK
4+0	4 years in Shanghai at SBC Including Foundation Year	No period of study in the UK but there are opportunities to visit
3+0	<u>No Foundation Year</u> 3 years in Shanghai at SBC	
2+2	2 years in Shanghai at SBC Including Foundation Year	Final 2 years in the UK
1+2	<u>No Foundation Year</u> 1 year in Shanghai at SBC	



Degrees

IET The Institution of
Engineering and Technology

AACSB Business
Education
Alliance
Member

PRME
SIGNATORY MEMBER

CIOL

EFMD
GLOBAL
MEMBER

4+0(3+0) : 4 or 3 years in Shanghai

BA (Hons) Business Management

**Sheffield
Hallam
University**
Knowledge Applied

BEng (Hons) Electrical and Electronic Engineering

 **LIVERPOOL
JOHN MOORES
UNIVERSITY**

BEng (Hons) Mechanical Engineering

 **LIVERPOOL
JOHN MOORES
UNIVERSITY**



Degrees

IET The Institution of
Engineering and Technology

AACSB Business
Education
Alliance
Member

PRME
SIGNATORY MEMBER

CIOL

EFMD
GLOBAL
MEMBER

2+2(1+2) : 2 or 1 years in Shanghai and final 2 years in UK



**There are more than 40 majors related
to Business and Engineering available
for SBC students to choose from**





Degrees

BUSINESS	UNIVERSITY OF BRADFORD	University of HUDDERSFIELD	UNIVERSITY OF LEEDS	LEEDS BECKETT UNIVERSITY	LIVERPOOL JOHN Moores UNIVERSITY	University of Salford	University of Sheffield	Sheffield Hallam University
Business & Management (including work placement)	●							
Business and Financial Management (with Finance)		●		●	●	●		●
Business Management with Finance with Professional Placement Year						●		
Business and Human Resource Management								●
Business and Management	●	●	●	●	●	●	●	●
Business Management with Professional Placement Year						●		
Business with (Digital) Marketing					●			●
Business Management and the Human Resource			●					
Business Management with Marketing			●					
Business Management with Sport						●		
Business Management with Sport with Professional Experience Year						●		
Business Studies								●
Events Management		●		●	●			●
Hospitality Business Management								
International Business (Management)	●	●	●		●			●
International Business & Management (including work placement)	●							
International Events Management						●		
International Hospitality Business Management								●



Degrees

ENGINEERING	UNIVERSITY OF BRADFORD	UNIVERSITY OF HUDDERSFIELD	UNIVERSITY OF LEEDS	LEEDS BECKETT UNIVERSITY	UNIVERSITY OF SHEFFIELD HALLAM	UNIVERSITY OF Salford	University of Sheffield	Sheffield Hallam University
Aeronautical and Aerospace Engineering			●					
Automotive and Motorsport Engineering		●						
Automotive Engineering			●					●
Computer Science	●							
Computer Science (including work placement)	●							
Computer Science for Cyber Security	●							
Computer Science for Cyber Security with a year in industry	●							
Electrical and Electronic Engineering		●	●		●		●	●
Electronic and Communication Engineering		●	●					
Electronic Engineering		●	●			●	●	
Electrical Engineering							●	
Electronic Engineering and Computer Systems		●						
Electronics and Computer Engineering							●	
Electronics and Computer Engineering with a Year in Industry							●	
Electronics and Renewable Energy Systems			●					
Mechanical Engineering	●	●	●		●	●	●	●
Mechanical Engineering (including work placement)	●							
Medical Engineering			●					
Software Engineering	●							
Software Engineering (with Placement Year)	●							



Single Degree Application Documents

1. Fill out the SBC detailed application form (please send it to the university in Excel format after completion)
2. Copy of passport: Pages with photo and previous visa to China or other countries
3. Copy of high school diploma or equivalent certificate (Prospective diploma recipients must submit an official document issued by the current school to prove the current study status and expected graduation date. If applicants are admitted, a scan copy of the graduation certificate shall be sent before registration)
4. Transcripts of all courses in high school or results of international standardization test (A-LEVEL/GCSE/IGCSE/AP/SAT/ACT/UEC/STPM etc.)
5. Proof of English language proficiency (IELTS/Duolingo/TOEFL etc.)
6. Physical examination report
7. A digital passport-sized photo

-NO NEED for CSCA Test

-Whether a student can skip the foundation year (SBC Year 1) will be determined by the university after review

Please prepare the above-mentioned materials and send them to: international@sbcsust.edu.cn



Basic Cost

Tuition Fee at SBC:

CNY 100,000 / Year

(Same for both Dual Bachelor Degrees Programme and Single Bachelor Degree Programme)

Accommodation Fee:

CNY 15,000 / year (Male) CNY 18,000 / year (Female)

NCUK Registration Fee at SBC:

CNY 5,000 / Year

(Only students of Single Bachelor Degree Programme need to pay in SBC year 1 and SBC year 2)

Insurance Fee:

CNY 800 / Year



International Student Scholarship



- Early Application Scholarship: CNY 10,000**
- High Achiever Scholarship: CNY 20,000**
- Executive Dean's Outstanding Performance Scholarship: CNY 50,000**
- HSK 4 Scholarship: CNY 20,000 (For Dual Degrees Only)**



Student Enrollment

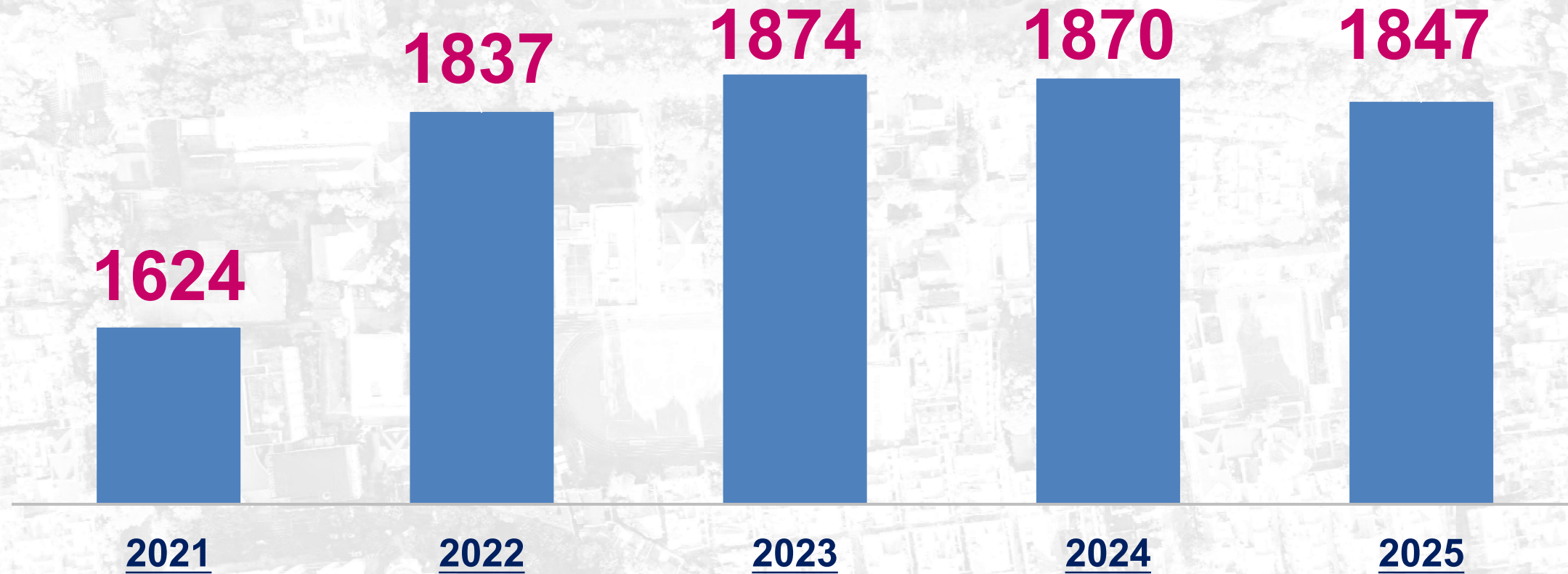
IET The Institution of
Engineering and Technology

AACSB Business
Education
Alliance
Member

PRME
SIGNATORY MEMBER

CIOL

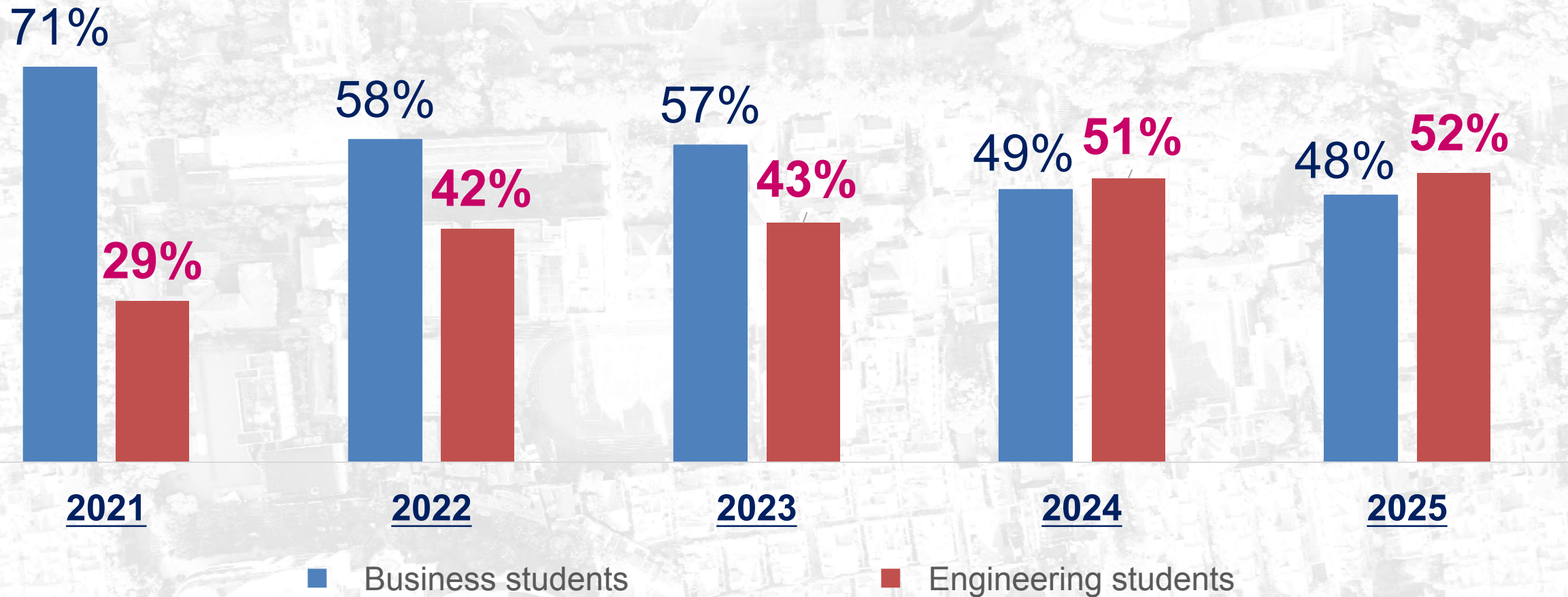
EFMD
GLOBAL
MEMBER



Student enrollment at SBC over the past five years



Student Composition



Student composition at SBC over the past five years



Student Development

IET The Institution of
Engineering and Technology

AACSB
Business
Education
Alliance
Member

PRME
SIGNATORY MEMBER

CIOL

EFMD
GLOBAL
MEMBER

- **Academic Development Centre**
- **Career Service Development Centre**
- **Overseas Services Centre**
- **Innovation and Leadership Centre**
- **Peer-assisted Learning Programme**





International Exchange

IET The Institution of
Engineering and Technology

AACSB Business
Education
Alliance
Member

PRME
SIGNATORY MEMBER

CIOL

EFMD
GLOBAL
MEMBER



**International Exchange
Going Global**



**International Summer School
Bringing In**



**International Competitions
Integration**



International Accreditations

Engineering

IET

The Institution of Engineering and Technology

PRME

Senior Signatory Member of the United Nations Principles for Responsible Management Education

Business

EFMD

Member of the European Foundation for Management Development

AACSB

Member of the Association to Advance Collegiate Schools of Business

Language

CIOL

The Chartered Institute of Linguists



Research Achievements

IET The Institution of
Engineering and Technology

AACSB Business
Education
Alliance
Member

PRME
SIGNATORY MEMBER

CIOL

EFMD
GLOBAL
MEMBER

Science

Current Issue First release papers Archive About [Submit manuscript](#)

[GET OUR E-ALERTS](#)

HOME > SCIENCE > VOL. 379, NO. 6632 > EXPANDED GEOGRAPHIC DISTRIBUTION AND DIETARY STRATEGIES OF THE EARLIEST...

[RESEARCH ARTICLE](#) | HOMININ EVOLUTION



Expanded geographic distribution and dietary strategies of the earliest Oldowan hominins and *Paranthropus*

THOMAS W. PLUMMER , JAMES S. OLIVER, EMMA M. FINESTONE , PETER W. DITCHFIELD , LAURA C. BISHOP ,
SCOTT A. BLUMENTHAL , CRISTINA LEMORINI , ISABELLA CARICOLA , SHARA E. BAILEY , ANDY I. R. HERRIES ,
JENNIFER A. PARKINSON, ELIZABETH WHITFIELD, FRITZ HERTEL , RAHAB N. KINYANJUI , THOMAS H. VINCENT, YOUJUAN LI ,
JULIEN LOUVS , STEPHEN R. FROST, DAVID R. BRAUN , JONATHAN S. REEVES , EMILY D. G. EARLY , BLASTO QNYANGO,
RAQUEL LAMELA-LOPEZ , FRANCES L. FORREST , HUAIYU HE, TIMOTHY P. LANE , MARINE FROUIN , SÉBASTIEN NOMADE,
EVAN P. WILSON, SIMION K. BARTILOL , NELSON KIPRONO ROTICH , AND RICHARD POTTS [fewer](#) [Authors Info & Affiliations](#)

SCIENCE • 9 Feb 2023 • Vol 379, Issue 6632 • pp. 561-566

2,676



Earlier Oldowan

Oldowan tools, consisting of stones with one to a few flakes removed, are the oldest widespread and temporally persistent hominin tools. The oldest of these were previously known from around 2.6 million years ago in Ethiopia, and by 2 million years ago, they were found to be quite widespread. Plummer *et al.* report on an older fossil site from around 3 to 2.6 million years ago in Kenya, where Oldowan tools were not only present, but were also being used to process a variety of foods, including hippopotamus. Thus, it appears that these tools were widespread much earlier than previous estimates and were widely used for food processing. Which hominins were using these tools remains uncertain, but *Paranthropus* fossils occur at the site. —SNV



CURRENT ISSUE



Epigenetics as a mediator of plasticity in cancer

BY ANDREW P. FEINBERG, ANDRE LEVCHENKO

Mitochondria metabolism sets the species-specific tempo of neuronal development

BY RYOHEI IWATA, PIERRE CASIMIR, ET AL.

Inborn errors of OAS-RNase L in SARS-CoV-2-related multisystem inflammatory syndrome in children

BY DANYEL LEE, JEREMIE LE PEN, ET AL.

[TABLE OF CONTENTS](#) >



Professor Laura Bishop -Displaying *Paranthropus* molar fossils





Further Studies

Outstanding outcomes of 2+2 pathway students

70%

of 2+2 students were admitted
to the University of Leeds and
the University of Sheffield

Outstanding outcomes of 4+0 pathway graduates

74.4%

of 4+0 students achieve First
Class and Upper Second
Class UK Honours degrees





Further Studies

IET The Institution of
Engineering and Technology

AACSB Business
Education's
Alliance
Member

PRME
SIGNATORY MEMBER

CIOL

EFMD
GLOBAL
MEMBER

Graduates pursuing further study

62%

of our graduates pursuing further
study, **39.13%** are admitted to
the world's top 50 universities
& **86.96%** to the *top 100.*

Data as of June 2025



Innovation & Entrepreneurship

IET The Institution of
Engineering and Technology

AACSB
Business
Education
Alliance
Member

PRME
SIGNATORY MEMBER

CIOL

EFMD
GLOBAL
MEMBER

**Incubated 24 projects, winning 12 national awards and
56 provincial/ministerial awards.**

In 2024, SBC Innovation and Leadership Center

National Finalist Award

**- China-US Young
Maker Competition**



National First Prize - "Challenge Cup"



National Gold Medal

**- "Internet Plus"
Competition**



National Silver Medal

**- China International
College Students'
Innovation
Competition**



National Second Prize

**National "Innovation/
Creativity/Entreprene
urship" Competition**





Employment Destinations

IET The Institution of
Engineering and Technology

AACSB
Business
Education
Alliance
Member

PRME
SIGNATORY MEMBER

CIOL

EFMD
GLOBAL
MEMBER

Research Institutes & Universities 26.7%, Government Agencies & Enterprises 68.3%, Self-Employment 5%

SBC Grads
Excel in
Enterprises

HERMÈS
PARIS

abbvie

Johnson & Johnson
强生

AstraZeneca

BYD

ICBC
中国工商银行

ORACLE
甲骨文

MICHELIN

Coca-Cola
可口可乐

Shell

General
Electric

中国农业银行
AGRICULTURAL BANK OF CHINA

MasterCard

NETFLIX

Google

TOYOTA

DELL

SIEMENS

EMERSON

VISA



Alibaba Group
阿里巴巴集团

pepsi

CISCO

Deutsche
Telekom

NVIDIA

Microsoft

HUAWEI

L'ORÉAL
PARIS
巴黎欧莱雅

MI

Morgan Stanley
摩根士丹利

Abbott
雅培

P&G

Nestlé

ExxonMobil
Energy lives here

TESLA

amazon

SONY

IBM

The
Walt Disney
Company

CATL
宁德时代

Tencent 腾讯

SAMSUNG

中国石油



Reputation

SBC has received multiple prestigious honours from the following bodies:

- The Department of International Cooperation and Exchanges, Ministry of Education, China
- UK partner universities; The Northern Consortium, UK

Served as the inaugural
and second-term **Chair**
Unit of **CJEC**



Outstanding Contribution Award
and Outstanding Sino-Foreign
Cooperative Education Institution
CJEC



Outstanding Partner Award and
Inspirational Teaching Award,
UK Partner Universities





Reputation

IET The Institution of
Engineering and Technology

AACSB
Business
Education
Alliance
Member

PRME
SIGNATORY MEMBER

CIOL

EFMD
GLOBAL
MEMBER

Congratulations

The Sino-British College, USST
**2025 Outstanding Sino-Foreign
Cooperative Education
Institution**



Issued by the Chinese-Foreign Joint Education Committee

CJEC membership covers **250**

Chinese-foreign cooperative
educational institutions.

Only **16** institutions were
selected as outstanding.

The Chinese-foreign Joint Education Committee (CJEC) was established in 2014 under the guidance of the Department of International Cooperation and Exchanges, MOE



SBC Images

IET The Institution of
Engineering and Technology

AACSB Business
Education
Alliance
Member

PRME
SIGNATORY MEMBER

CIOL

EFMD
GLOBAL
MEMBER





SBC Accommodation

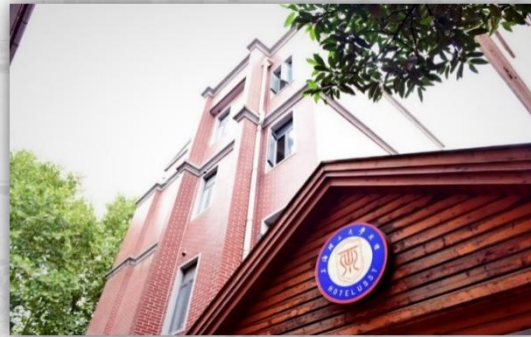
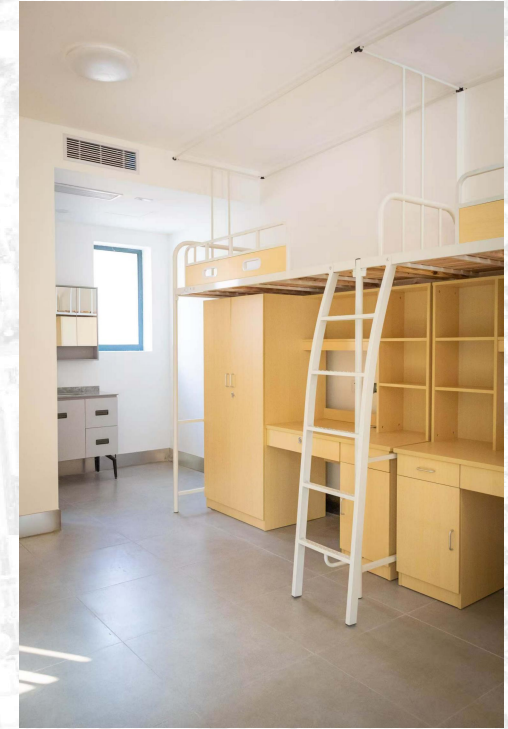
IET The Institution of
Engineering and Technology

AACSB
Business
Education's
Alliance
Member

PRME
SIGNATORY MEMBER

CIOL

EFMD
GLOBAL
MEMBER





SBC 上海理工大学中英国际学院
The Sino-British College, USST

IET The Institution of
Engineering and Technology

AACSB
Business
Education
Member

PRME
SIGNATORY MEMBER

CIOL

EFMD
GLOBAL
MEMBER

Welcome to SBC!



International Admissions:

+86 (0) 21 6474 2606

International@sbc.usst.edu.cn