



The Sino-British College

The University of Shanghai for Science and Technology

SBC, USST

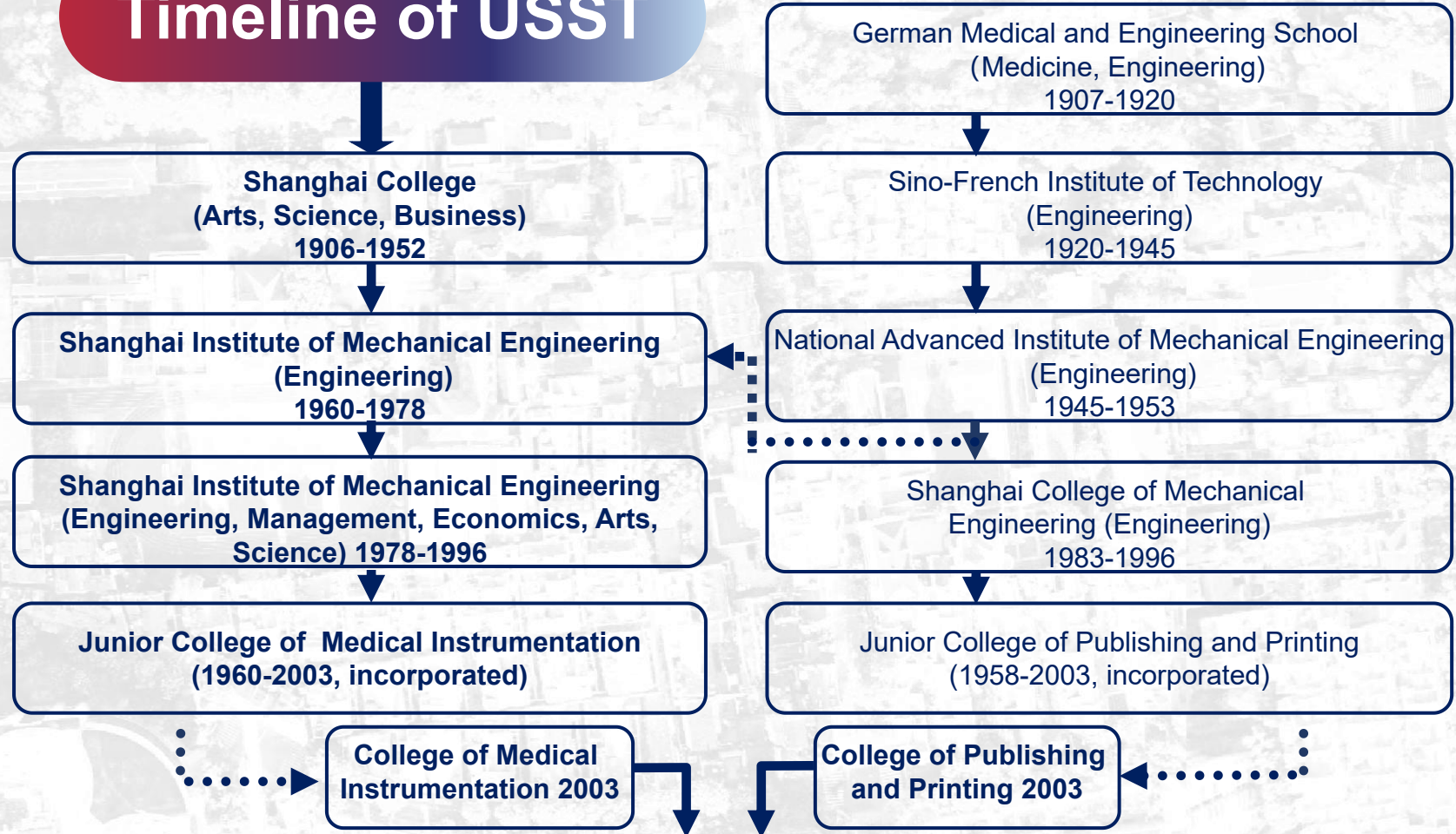


History of USST

Timeline of USST



To create a distinctive first-class university of science and technology



The University of Shanghai for Science and Technology



Status of USST



Fuxing Rd. Campus



Jungong Rd. Campus

Student Body	30,000+ students: 18,000+ undergraduates, 12,000+ postgraduates
Faculty & Staff	2,700+ employees, 7 Academicians, 108 recipients of National-level Talents, 442 recipients of Provincial/ministerial-level Talents
Scientific Research	1 ESI Top 1% Discipline: Engineering 11 ESI Top 1% Disciplines: Engineering, Materials Science, Chemistry, Computer Science, Environment/Ecology, Agricultural Sciences, Mathematics, Physics, Social Sciences, General etc.
Platforms	36 national-level teaching/research platforms, 101 provincial/ministerial-level platforms
Internationalization	2 Sino-Foreign Cooperative Education Institutions: The Sino-British College, The Sino-German College 43.1% of programmes pass international certification; Asia's first ASIIN certification; 20th Chinese university to pass AACSB certification
Social Service	National Model Institution for Technology Transfer



Academic Reputation



<p>6 individuals selected as 2023 "Highly Cited Researchers"</p>	<p>Ranked 46th nationally</p>
<p>2024 ShanghaiRanking's Academic Ranking of World Universities</p>	<p>Ranked 52nd-74th nationally</p>
<p>Development Speed Ranking of ShanghaiRanking's Academic Ranking of World Universities</p>	<p>Ranked 9th nationally</p>
<p>China University Alumni Association 2025 China University Rankings</p>	<p>Ranked 72nd nationally</p>
<p>2024 China University Graduate Salary Level Ranking</p>	<p>Ranked 36th nationally</p>

*There are a total of 3119 higher education institutions in China (source: Ministry of Education website, June 11, 2025)



History of SBC

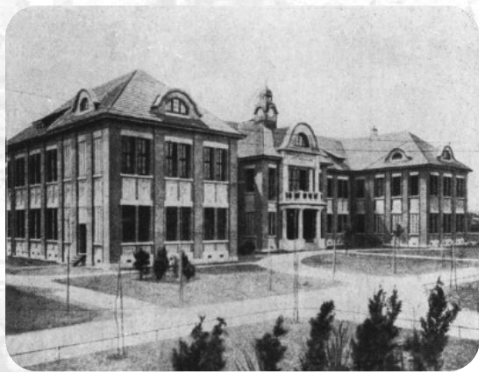
IET The Institution of Engineering and Technology

AACSB Business Education Alliance Member

PRME SIGNATORY MEMBER

CIOL

EFMD GLOBAL MEMBER



Three majors in Medical, Engineering and German

One of the pivotal origins of the university's century-long engineering education

1907-1919

Tongji German Medical School (Tongji Deutsche Medizinschule)

1920-1945

Sino-French Institute of Technology (Institut Franco-Chinois d'Ingénierie)

1945-1953

National Shanghai Advanced Mechanical Vocational School

1985-1998 Hamburg University of Applied Sciences

1988-1996 Shanghai-New York Syracuse International Business College

1953-1982

Shanghai School of Power Machinery Manufacturing
Shanghai School of Machinery Manufacturing

1983-1996

Shanghai Junior College of Machinery Engineering

Founded in 2006

2006-present
The Sino-British College, USST

1996-2006
Business School, USST

2004-2006
MBA Degree Center





Gathering of Talents

IET The Institution of
Engineering and Technology

AACSB Business
Education's
Alliance
Member

PRME
SIGNATORY MEMBER

CIOL

EFMD
GLOBAL
MEMBER



Qian Lingxi (1916-2009)
Engineering Mechanic



Tian Binggeng (1919-2017)
Electrical Engineering Expert



Zhou Liwei (1932-)
Electro-Optics and Night
Vision Technology Expert



Min Naiben (1935-2018)
Crystal Physicist




Su Dingqiang (1936-)
Astronomer and Optical
Engineering Expert

Academicians of the Chinese Academy of Engineering



SBC Location

 **Shaanxi South Road Metro Station**
Line **1** **10** **12**



Shanghai Pudong International Airport
1 hour by car



Shanghai Bund



40 mins by car / line 10

Shanghai Hongqiao International Airport

Shanghai Hongqiao Railway Station



Huaihai Road



Shanghai Culture Square



SBC Campus



7 Historical Buildings



Built in 1909



Built in 1909

SBC Library
A Shanghai-unique Prussian-style building



Built 1914

German Medical and Engineering School



Built 1914

Sino-French Institute of Technology



Built 1911



Built 1914



Built 1917

Independent campus with the optimal downtown location



Distinctive Features



Sheffield Hallam University (Founded 1843)



University of Bradford (Founded 1882)



University of Sheffield (Founded 1828)



University of Huddersfield (Founded 1841)

University of Salford (Founded 1896)

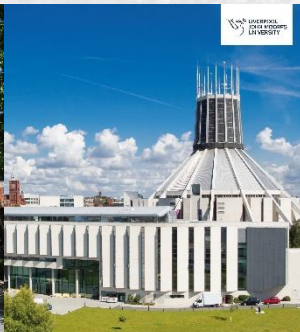


University of Leeds (Founded 1831)

Leeds Beckett University (Founded 1824)



Liverpool John Moores University (Founded 1823)





SBC Structure

Management Structure

Highest Decision-Making Body:
Management Council Committee

Administrative Decision-Making Bodies:
Executive Meeting

USST

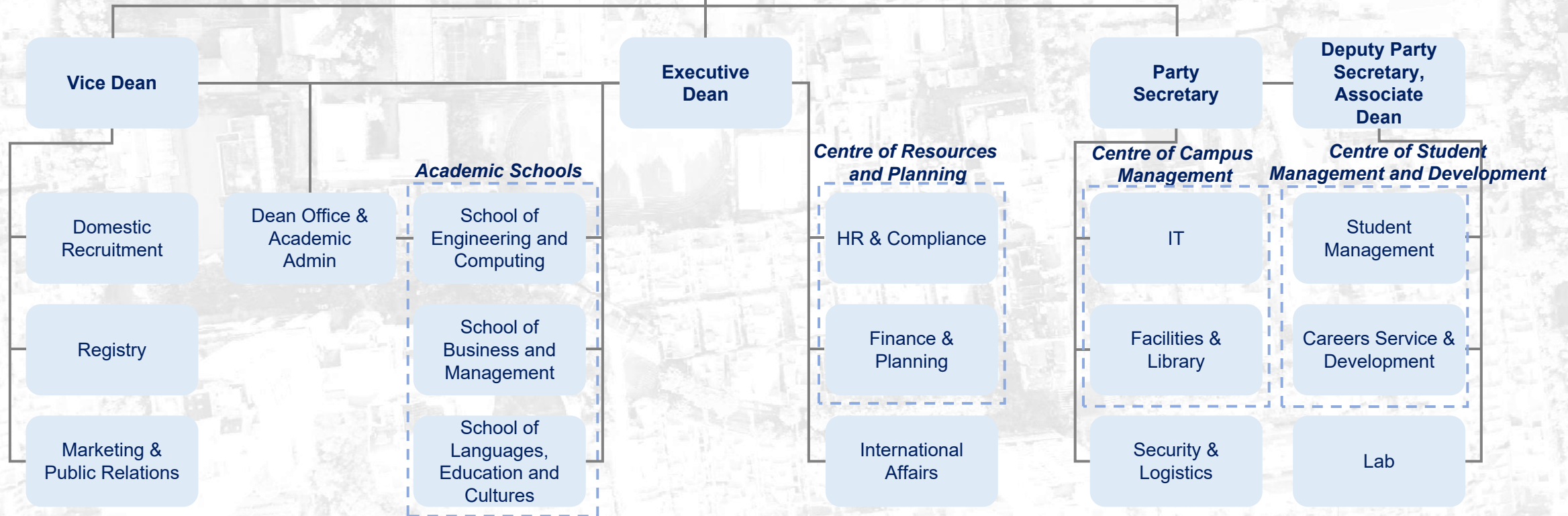
Chair of SBC Management Council

Dean of SBC

Internal Department

Party & Administrative Dept.: 12

Chinese & International Faculty/Staff: 120





International Faculty



Academic Faculty's Educational Background

- University of Oxford
- University College London
- Tsinghua University
- University of Manchester
- Fudan University
- The University of Queensland
- Shanghai Jiao Tong university
- King's College London
- University of Bristol
- University of Birmingham
- University of Warwick
- University of Technology Sydney
- University of Wisconsin-Madison
- University of Leeds
- University of Science and Technology of China
-



Faculty and staff from over **20** different countries and regions.

International faculty

account for approximately of the academic staff.

77%





Academic Structure & Programmes

Academic Structure

School of Business Management

School of Engineering and Computing

School of Languages, Education and Cultures

Programmes



Business Management (BM)



Mechanical Engineering (ME)



Electrical & Electronic Engineering (EEE)

Dual Degree Programme

BM

USST & Sheffield Hallam University

ME

USST & UNIVERSITY of BRADFORD

EEE

(undergraduate)

(China and UK partner universities)

Four Years in Shanghai



Dual Degree Application Documents



1. Fill out the SBC detailed application form (please send it to the university in Excel format after completion)
2. Copy of passport: Pages with photo and previous visa to China or other countries
3. Copy of high school diploma or equivalent certificate (Prospective diploma recipients must submit an official document issued by the current school to prove the current study status and expected graduation date. If applicants are admitted, a scan copy of the graduation certificate shall be sent before registration)
4. Transcripts of all courses in high school or results of international standardization test (A-LEVEL/IGCSE/AP/SAT/ACT/UEC/STPM etc.)
5. Proof of English language proficiency (IELTS/Duolingo/TOEFL etc.)
6. Physical examination report
7. A digital passport-sized photo
8. Proof of Chinese language proficiency (HSK test)
9. CSCA Test

Major: Business Management

Test subjects: Mathematics

Major: Mechanical Engineering

Test subjects: Mathematics, Physics

Major: Electrical & Electronic Engineering

Test subjects: Mathematics, Physics, Chemistry

Please prepare the above-mentioned materials and send them to: international@sbc.usst.edu.cn



Academic Structure & Programmes



Academic Structure

School of Business Management

School of Engineering and Computing

School of Languages, Education and Cultures

Programmes



Business Management (BM)



Mechanical Engineering (ME)



Electrical & Electronic Engineering (EEE)

Single Degree Programme



(undergraduate)

(UK partner universities)

All courses taught in English

PATHWAY 4+0(3+0): 4(3) Years in Shanghai **OR**
PATHWAY 2+2(1+2): 2(1) Years in Shanghai+2 Years in UK



Academic Structure & Programmes



What does PATHWAY mean at SBC?

PATHWAY	In Shanghai at SBC	In the UK
4+0	4 years in Shanghai at SBC Including Foundation Year	No period of study in the UK but there are opportunities to visit
3+0	<u>No Foundation Year</u> 3 years in Shanghai at SBC	
2+2	2 years in Shanghai at SBC Including Foundation Year	Final 2 years in the UK
1+2	<u>No Foundation Year</u> 1 year in Shanghai at SBC	



Degrees



4+0(3+0) : 4 or 3 years in Shanghai

BA (Hons) Business Management



BEng (Hons) Electrical and Electronic Engineering



BEng (Hons) Mechanical Engineering





Degrees



2+2(1+2) : 2 or 1 years in Shanghai and final 2 years in UK



There are more than 40 majors related to Business and Engineering available for SBC students to choose from





Degrees



ENGINEERING	UNIVERSITY OF BRADFORD	UNIVERSITY OF HUDDERSFIELD	UNIVERSITY OF LEEDS	LEEDS BECKETT UNIVERSITY	UNIVERSITY OF SHEFFIELD	UNIVERSITY OF SALFORD	UNIVERSITY OF SHEFFIELD	SHEFFIELD HALLAM UNIVERSITY
Aeronautical and Aerospace Engineering			●					
Automotive and Motorsport Engineering		●						
Automotive Engineering			●					●
Computer Science	●							
Computer Science (including work placement)	●							
Computer Science for Cyber Security	●							
Computer Science for Cyber Security with a year in industry	●							
Electrical and Electronic Engineering		●	●		●		●	●
Electronic and Communication Engineering		●	●					
Electronic Engineering		●	●			●	●	
Electrical Engineering							●	
Electronic Engineering and Computer Systems		●						
Electronics and Computer Engineering							●	
Electronics and Computer Engineering with a Year in Industry							●	
Electronics and Renewable Energy Systems			●					
Mechanical Engineering	●	●	●		●	●	●	●
Mechanical Engineering (including work placement)	●							
Medical Engineering			●					
Software Engineering	●							
Software Engineering (with Placement Year)	●							



Single Degree Application Documents



1. Fill out the SBC detailed application form (please send it to the university in Excel format after completion)
2. Copy of passport: Pages with photo and previous visa to China or other countries
3. Copy of high school diploma or equivalent certificate (Prospective diploma recipients must submit an official document issued by the current school to prove the current study status and expected graduation date. If applicants are admitted, a scan copy of the graduation certificate shall be sent before registration)
4. Transcripts of all courses in high school or results of international standardization test (A-LEVEL/GCSE/IGCSE/AP/SAT/ACT/UEC/STPM etc.)
5. Proof of English language proficiency (IELTS/Duolingo/TOEFL etc.)
6. Physical examination report
7. A digital passport-sized photo

-NO NEED for CSCA Test

-Whether a student can skip the foundation year (SBC Year 1) will be determined by the university after review

Please prepare the above-mentioned materials and send them to: international@sbc.usst.edu.cn



Basic Cost

Tuition Fee at SBC:

CNY 100,000 / Year

(Same for both Dual Bachelor Degrees Programme and Single Bachelor Degree Programme)

Accommodation Fee:

CNY 14,000 / year (Male) CNY 18,000 / year (Female)

NCUK Registration Fee at SBC:

CNY 5,000 / Year

(Only students of Single Bachelor Degree Programme need to pay in SBC year 1 and SBC year 2)

Insurance Fee:

CNY 800 / Year



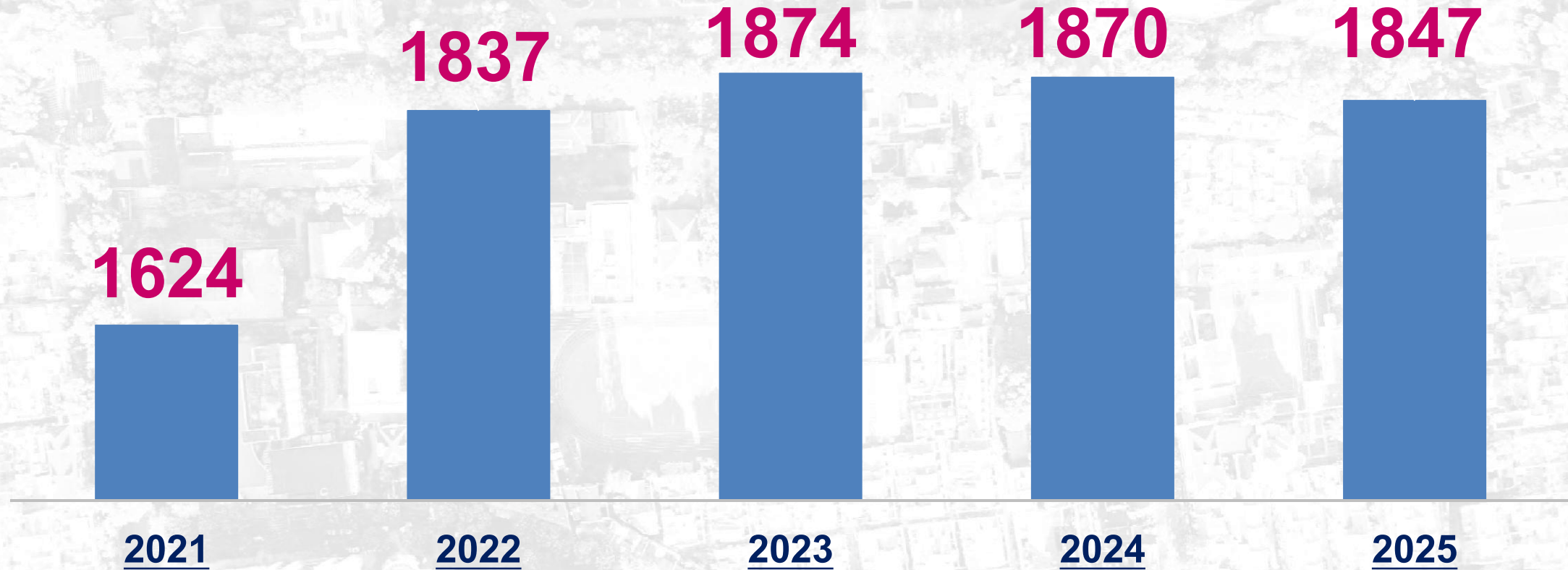
International Student Scholarship



- Early Application Scholarship: CNY 10,000**
- High Achiever Scholarship: CNY 20,000**
- Executive Dean's Outstanding Performance Scholarship: CNY 50,000**
- HSK 4 Scholarship: CNY 20,000 (For Dual Degrees Only)**



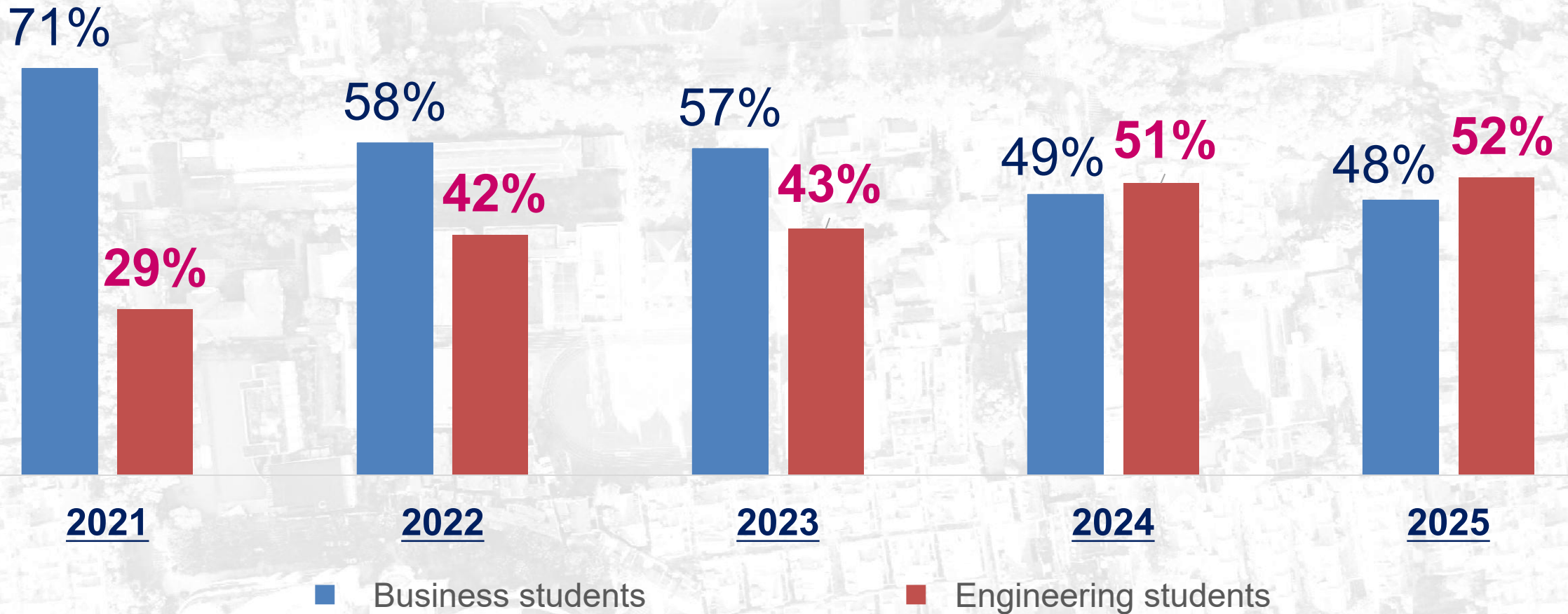
Student Enrollment



Student enrollment at SBC over the past five years



Student Composition



Student composition at SBC over the past five years



Student Development



- **Academic Development Centre**
- **Career Service Development Centre**
- **Overseas Services Centre**
- **Innovation and Leadership Centre**
- **Peer-assisted Learning Programme**





International Exchange

IET The Institution of Engineering and Technology

AACSB Business Education's Alliance Member

PRME SIGNATORY MEMBER

CIOL

EFMD GLOBAL MEMBER



**International Exchange
Going Global**



**International Summer School
Bringing In**



**International Competitions
Integration**



International Accreditations





Research Achievements



Science Current Issue First release papers Archive About Submit manuscript GET OUR E-ALERTS

HOME > SCIENCE > VOL. 379, NO. 6632 > EXPANDED GEOGRAPHIC DISTRIBUTION AND DIETARY STRATEGIES OF THE EARLIEST...

@ RESEARCH ARTICLE | HOMININ EVOLUTION f t in u o e

Expanded geographic distribution and dietary strategies of the earliest Oldowan hominins and *Paranthropus*

THOMAS W. PLUMMER, JAMES S. OLIVER, EMMA M. FINESTONE, PETER W. DITCHFIELD, LAURA C. BISHOP, SCOTT A. BLUMENTHAL, CRISTINA LEMORINI, ISABELLA CARICOLA, SHARA E. BAILEY, ANDY I. R. HERRIES, JENNIFER A. PARKINSON, ELIZABETH WHITFIELD, FRITZ HERTEL, RAHAB N. KINYANJU, THOMAS H. VINCENT, YOUJUAN LI, JULIEN LOUYS, STEPHEN R. FROST, DAVID R. BRAUN, JONATHAN S. REEVES, EMILY D. G. EARLY, BLASTO ONYANGO, RAQUEL LAMELA-LOPEZ, FRANCES L. FORREST, HUAIYU HE, TIMOTHY P. LANE, MARINE FROUIN, SÉBASTIEN NOMADE, EVAN P. WILSON, SIMION K. BARTILOL, NELSON KIPRONO ROTICH, AND RICHARD POTTS fewer [Authors Info & Affiliations](#)

SCIENCE · 9 Feb 2023 · Vol 379, Issue 6632 · pp. 561-566

2,676 🔔 📄 🗨️ 📧

Earlier Oldowan

Oldowan tools, consisting of stones with one to a few flakes removed, are the oldest widespread and temporally persistent hominin tools. The oldest of these were previously known from around 2.6 million years ago in Ethiopia, and by 2 million years ago, they were found to be quite widespread. Plummer *et al.* report on an older fossil site from around 3 to 2.6 million years ago in Kenya, where Oldowan tools were not only present, but were also being used to process a variety of foods, including hippopotamus. Thus, it appears that these tools were widespread much earlier than previous estimates and were widely used for food processing. Which hominins were using these tools remains uncertain, but *Paranthropus* fossils occur at the site. —SNV

CURRENT ISSUE

Epigenetics as a mediator of plasticity in cancer
BY ANDREW P. FEINBERG, ANDRE LEVCHENKO

Mitochondria metabolism sets the species-specific tempo of neuronal development
BY RYOHEI IWATA, PIERRE CASIMIR, ET AL.

Inborn errors of OAS-RNase L in SARS-CoV-2-related multisystem inflammatory syndrome in children
BY DANYEL LEE, JEREMIE LE PEN, ET AL.

[TABLE OF CONTENTS](#)



Professor Laura Bishop -Displaying Paranthropus molar fossils





Further Studies

Outstanding outcomes of 2+2 pathway students

70%

of 2+2 students were admitted
to the University of Leeds and
the University of Sheffield

Outstanding outcomes of 4+0 pathway graduates

74.4%

of 4+0 students achieve First
Class and Upper Second
Class UK Honours degrees





Further Studies



Graduates pursuing further study

62%

of our graduates pursuing further study, **39.13%** are admitted to the world's top 50 universities & **86.96%** to the top 100.

Data as of June 2025



Innovation & Entrepreneurship



Incubated 24 projects, winning 12 national awards and 56 provincial/ministerial awards.
In 2024, SBC Innovation and Leadership Center

National Finalist Award

- China-US Young Maker Competition



National First Prize - "Challenge Cup"



National Gold Medal

- "Internet Plus" Competition



National Silver Medal

- China International College Students' Innovation Competition



National Second Prize

National "Innovation/Creativity/Entrepreneurship" Competition





Employment Destinations

Research Institutes & Universities 26.7%, Government Agencies & Enterprises 68.3%, Self-Employment 5%

SBC Grads Excel in Enterprises

The grid features the following logos (clockwise from top-left):

- HERMÈS PARIS
- abbvie
- Johnson & Johnson 强生
- AstraZeneca
- BYD
- ICBC 中国工商银行
- ORACLE 甲骨文
- MICHELIN 米其林
- Coca-Cola 可口可乐
- Shell
- General Electric
- 中国农业银行 AGRICULTURAL BANK OF CHINA
- MasterCard
- NETFLIX
- Google
- TOYOTA
- DELL
- SIEMENS
- EMERSON
- VISA
- Apple
- Alibaba Group 阿里巴巴集团
- pepsi
- CISCO
- Deutsche Telekom
- NVIDIA
- Microsoft
- HUAWEI
- L'ORÉAL PARIS 巴黎欧莱雅
- MI
- Morgan Stanley 摩根士丹利
- Abbott 雅培
- P&G
- Nestlé
- ExxonMobil Energy lives here
- TESLA
- amazon
- SONY
- IBM
- The WALT DISNEY Company
- Tencent 腾讯
- SAMSUNG
- 中国石化
- CATL 宁德时代



Reputation



SBC has received multiple prestigious honours from the following bodies:

- The Department of International Cooperation and Exchanges, Ministry of Education, China
- UK partner universities; The Northern Consortium, UK

Served as the inaugural and second-term **Chair Unit of CJEC**



Outstanding Contribution Award and Outstanding Sino-Foreign Cooperative Education Institution
CJEC



Outstanding Partner Award and Inspirational Teaching Award, UK Partner Universities





Congratulations



The Sino-British College, USST
**2025 Outstanding Sino-Foreign
Cooperative Education
Institution**

Issued by the Chinese-Foreign Joint Education Committee

CJEC membership covers **250**

Chinese-foreign cooperative
educational institutions.

Only **16** institutions were
selected as outstanding.

The Chinese-foreign Joint Education Committee (CJEC) was established in 2014 under the guidance of the Department of International Cooperation and Exchanges, MOE



SBC Images





SBC Accommodation

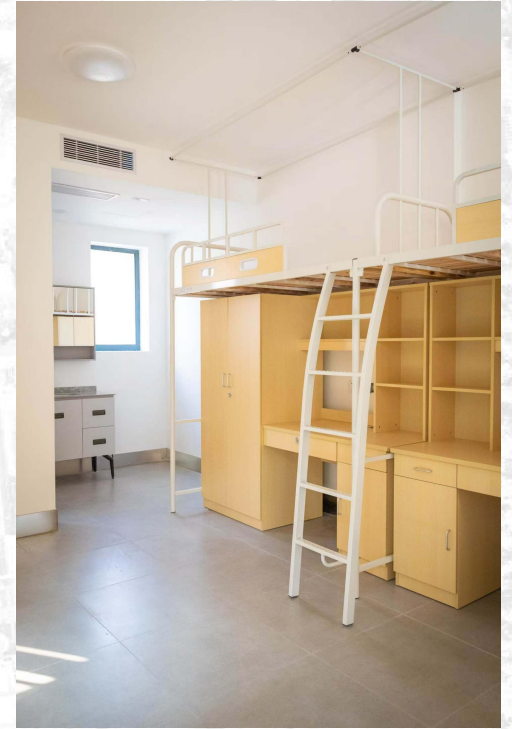
IET The Institution of
Engineering and Technology

AACSB
Business
Education's
Alliance
Member

PRME
SIGNATORY MEMBER

CIOL

EFMD
GLOBAL
MEMBER





SBC 上海理工大学中英国际学院
The Sino-British College, USST

IET The Institution of
Engineering and Technology

AACSB
Business
Education
Alliance
Member

PRME
SIGNATORY MEMBER

CIOL

EFMD
GLOBAL
MEMBER

Welcome to SBC!



International Admissions:

+86 (0) 21 6474 2606

International@sbc.usst.edu.cn